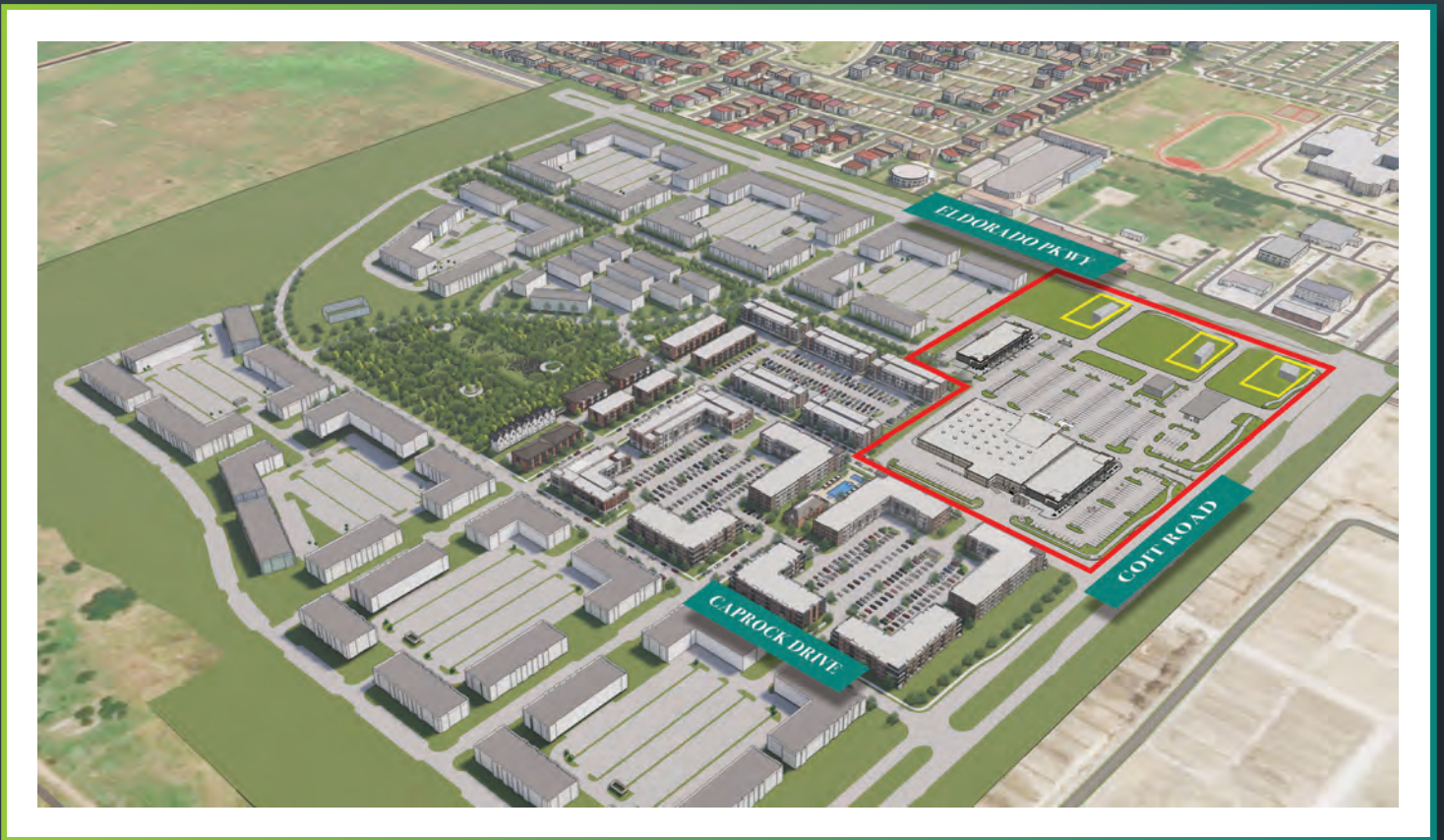
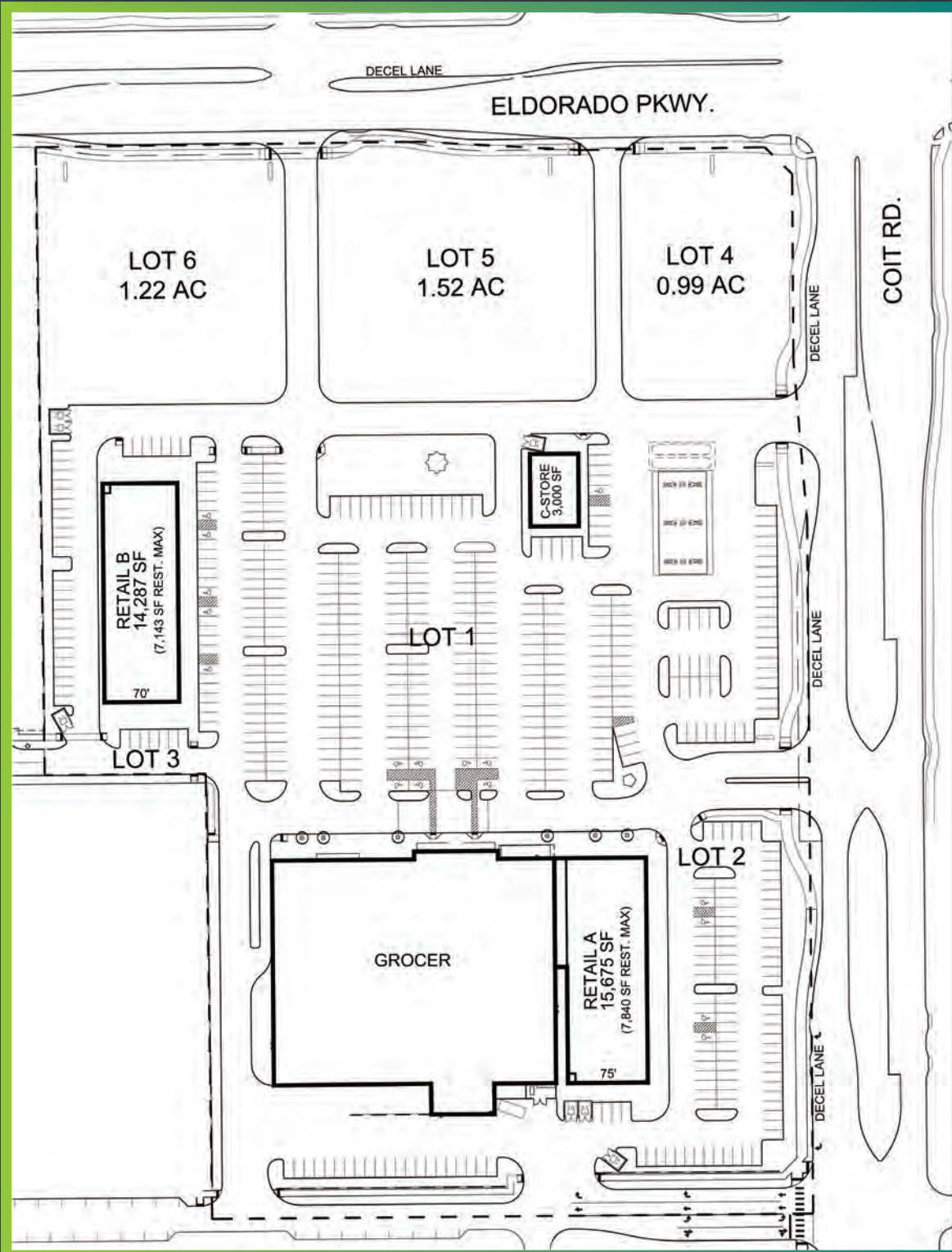


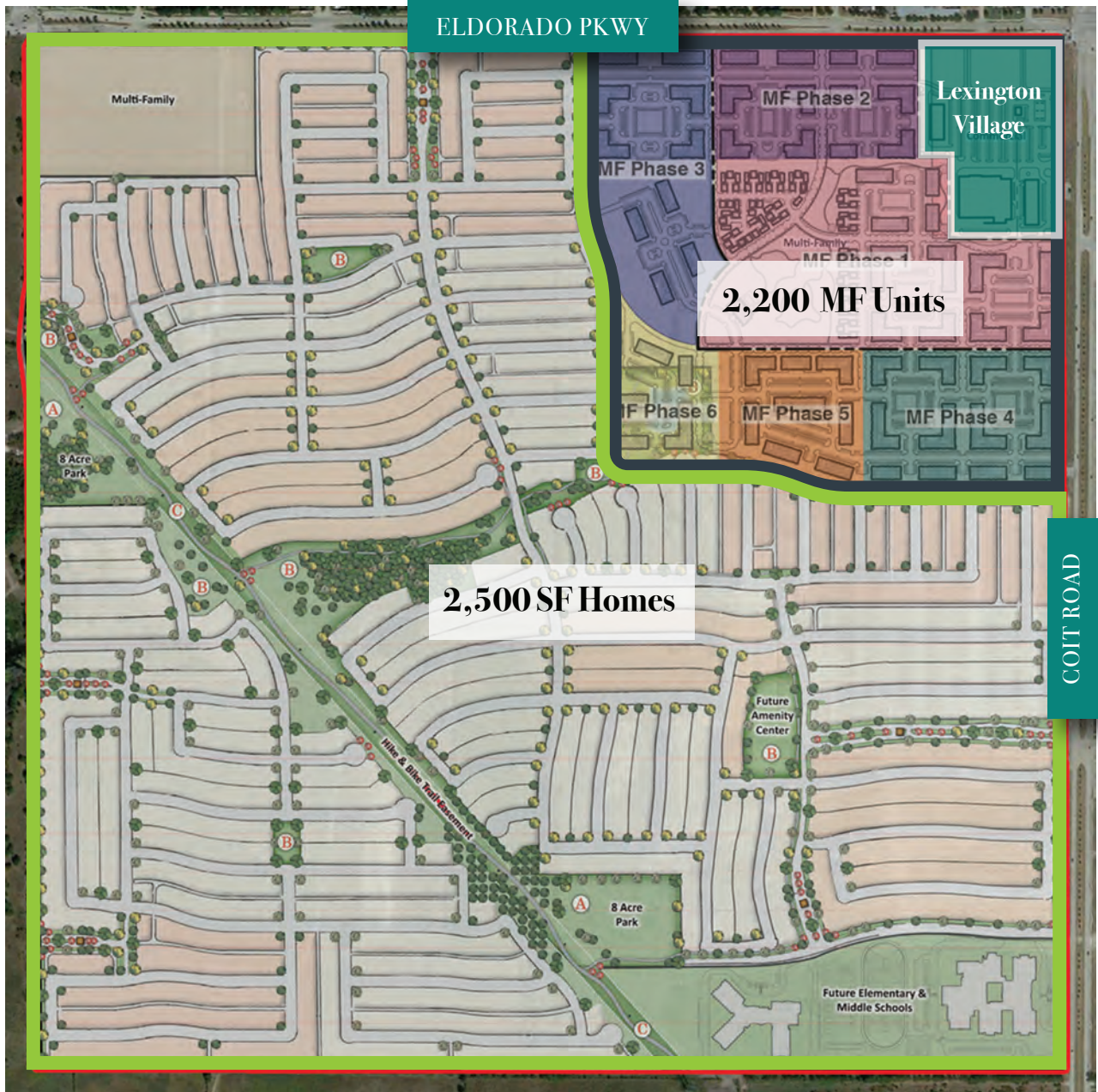
LEXINGTON VILLAGE

FRISCO, TEXAS

Lexington Village is the retail component for the 600 acre Master Planned Community in Frisco, Texas, a part of the famed Brinkmann Ranch. The development will feature a national, traditional grocer as well as 30,000 square feet of retail and restaurant space with single use out-parcels. The Master Plan of Lexington Residential Community will include approximately 2,500 single family homes and 2,200 multi-family units creating approximately 8 residential units to the acre with incomes and density rarely seen in DFW.

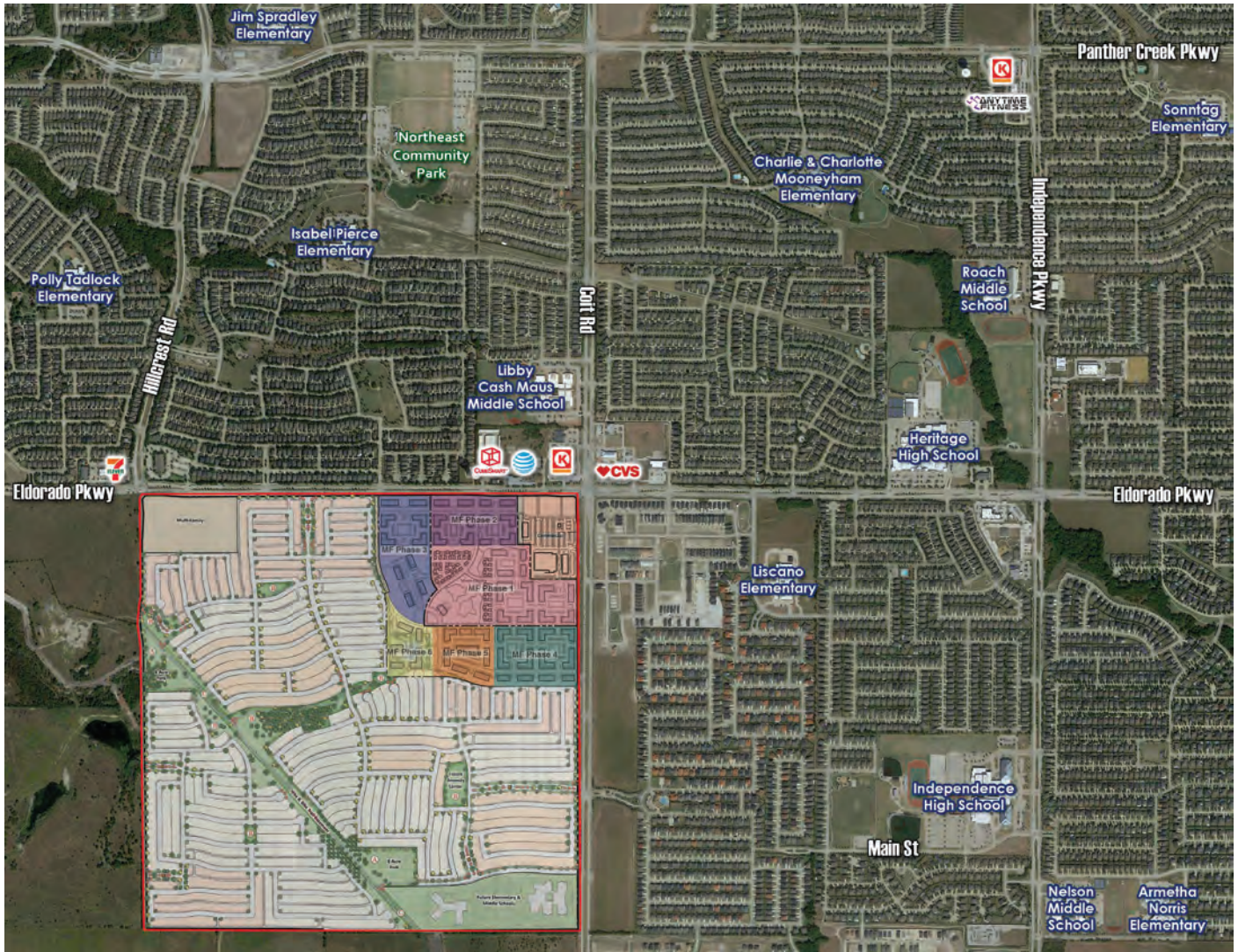






- ◆ Lexington Village will have direct connectivity to the 2,500 single family homes and 2,200 multi-family units on-site at Lexington, a 600 acre master planned community complete with walking trails, parks, first class amenities, and a future middle school and elementary school.
- ◆ 6 high schools within 7.5 minute drive time of the intersection, and over 40 schools K-12 in a 10 minute drive time.
- ◆ Highly educated population and high income households immediately surrounding the site.

Demographics		
1 Mile	2 Mile	3 Mile
Total Population		
16,345	62,082	121,231
Average HHI		
\$159,403	\$159,569	\$143,874



Centergy Retail

For leasing information please contact: Austin Miller, Director of Leasing
 Amiller@centergyretail.com | C: 214.673.0888 | W: 214.368.7200
 centergyretail.com

The information contained on this illustration/exhibit/brochure, including photographs, maps, site plans, text, and all other elements either visual or written are provided for the convenience of our customers. Centergy Retail neither warrant or guarantee in any way the accuracy or completeness of this information. Actual development may vary from representations herein and is subject to change without any prior notice. Content obtained from outside sources, including but not limited to the City of Frisco, Texas is also subject to change.